

CHIFFRES CLÉS

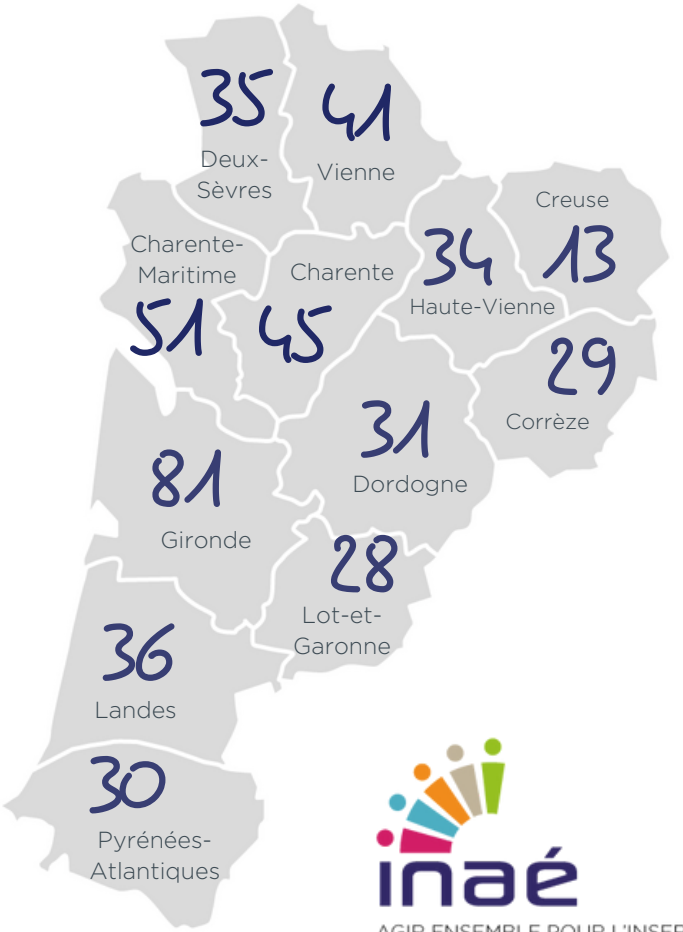
L'IAE en 2021

Insertion par l'Activité Economique

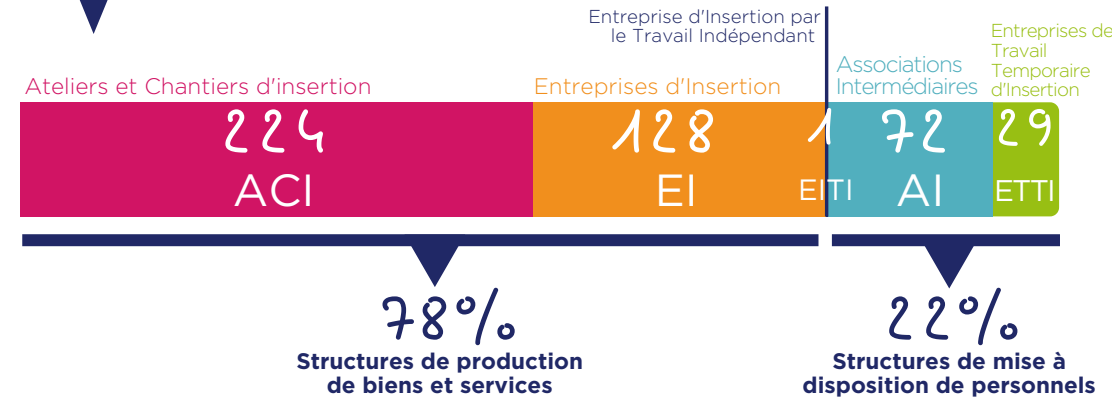
NOUVELLE-AQUITAINE

454 SIAE

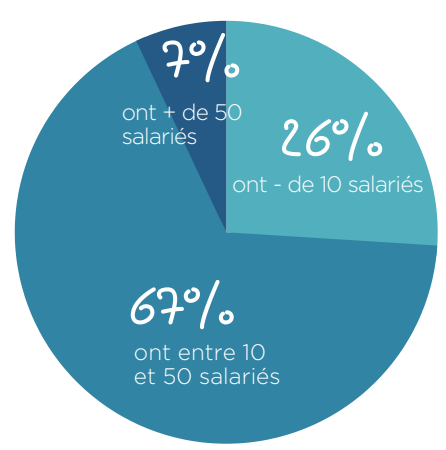
28720 Salariés en parcours



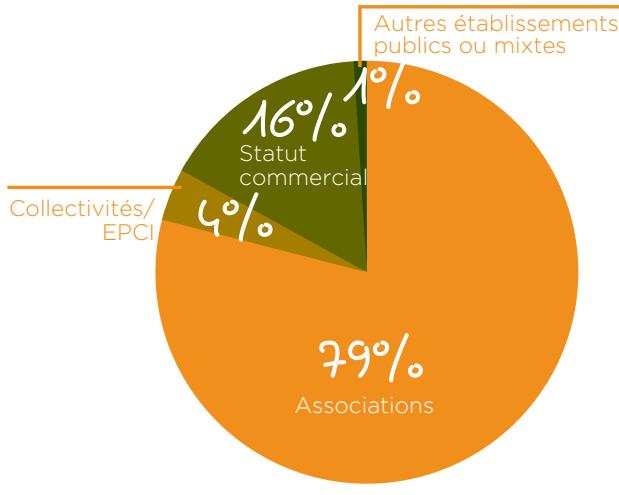
PORTRAIT DES SIAE



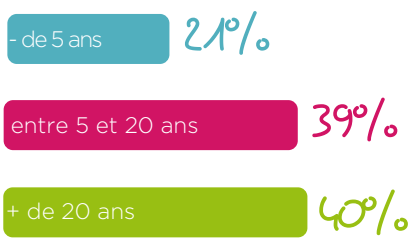
RÉPARTITION PAR TAILLE (ETP)



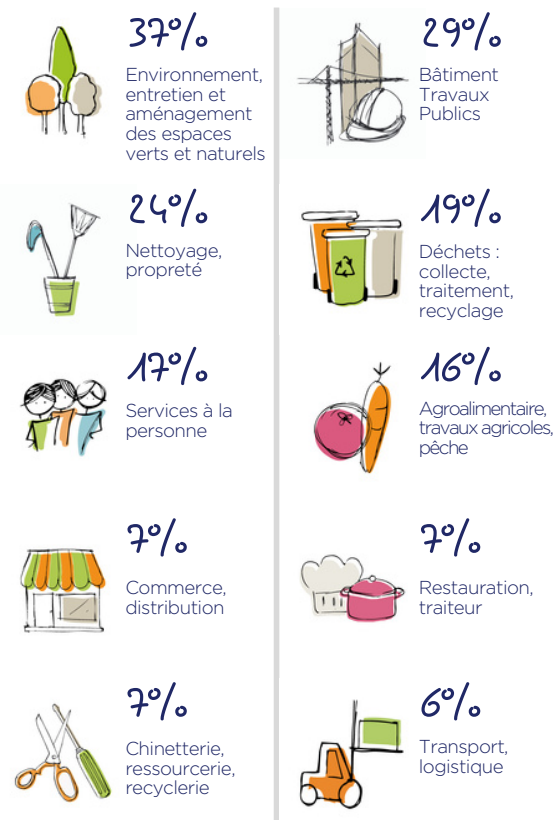
STATUT JURIDIQUE



ANCIENNETÉ



SECTEURS D'ACTIVITÉ

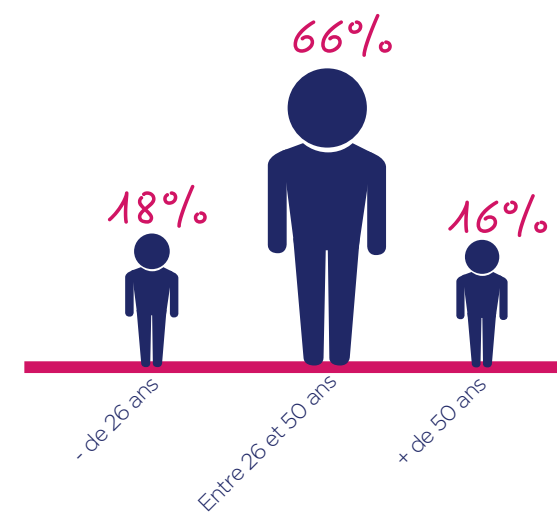
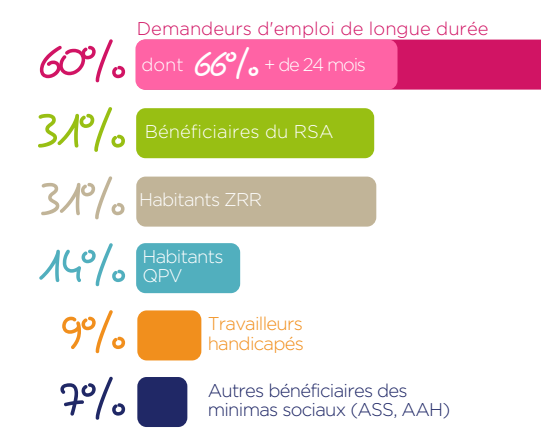
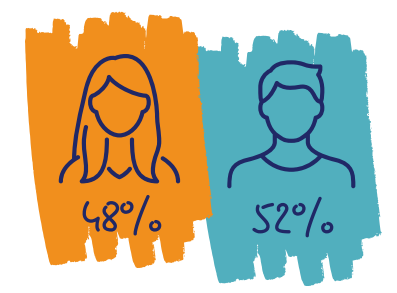


IMPACT SOCIAL

PROFIL DES SALARIÉS

28720 Salariés en parcours

soit 7680 ETP



76% des salariés ont un niveau inférieur au Bac

TREMLIN VERS L'EMPLOI

