

CHIFFRES CLÉS

L'IAE en 2020

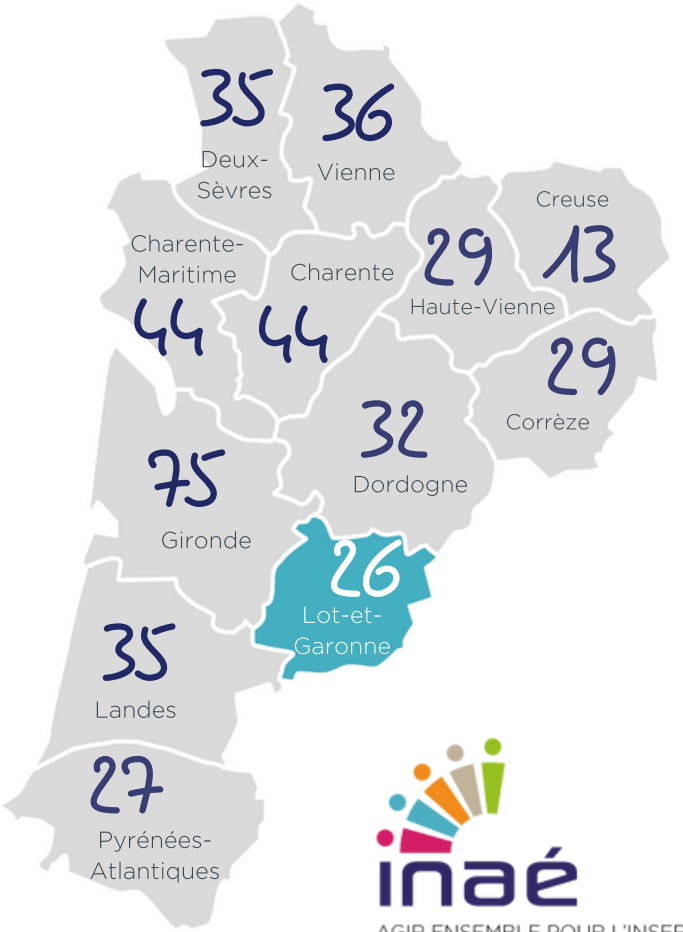
Insertion par l'Activité Economique

LOT ET GARONNE

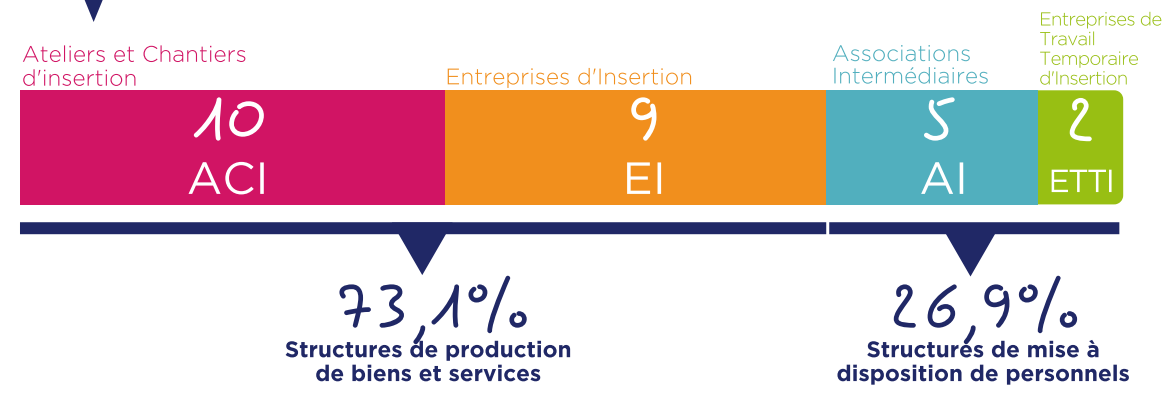
47

26 SIAE

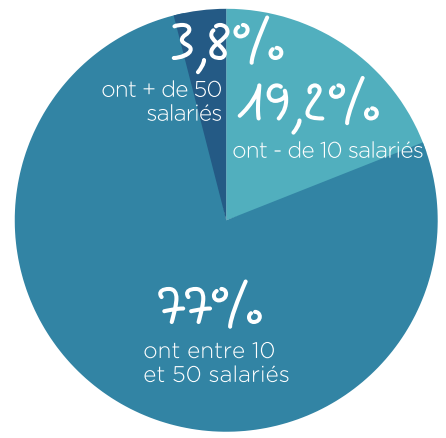
1120 Salariés en parcours



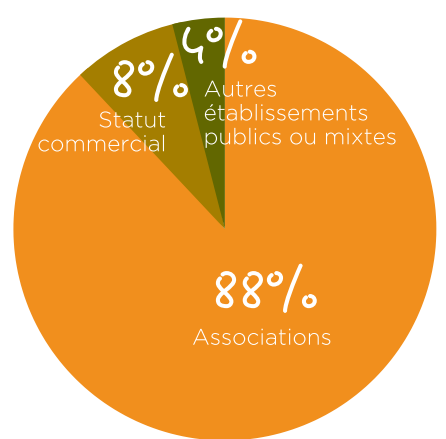
PORTRAIT DES SIAE



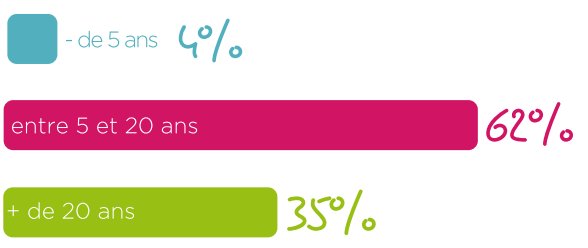
RÉPARTITION PAR TAILLE (ETP)



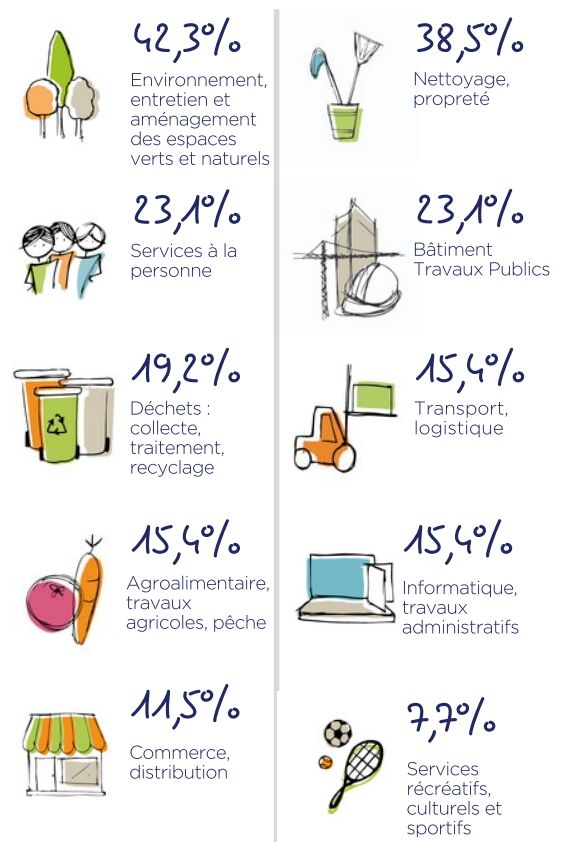
STATUT JURIDIQUE



ANCIENNETÉ



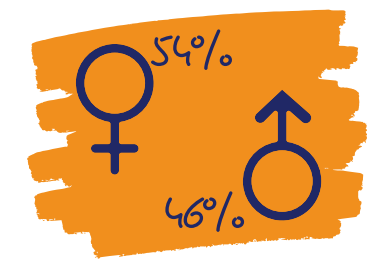
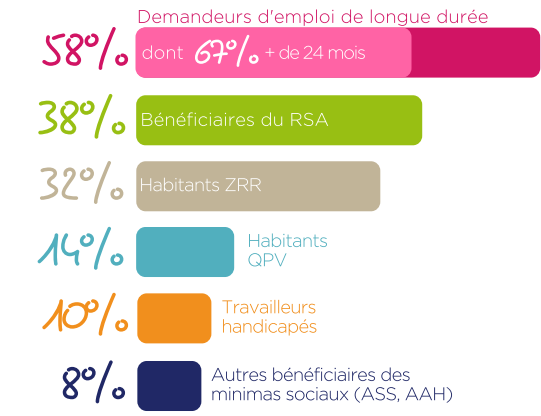
SECTEURS D'ACTIVITÉ



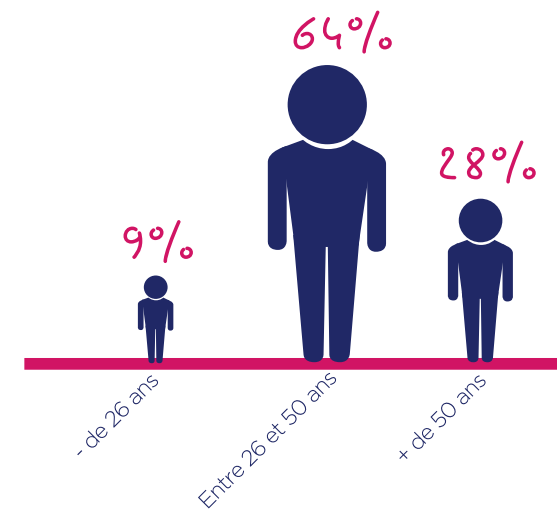
IMPACT SOCIAL

PROFIL DES SALARIÉS

1120 Salariés en parcours
soit 345 ETP



83% des salariés ont un niveau inférieur au Bac



TREMLIN VERS L'EMPLOI

